

Spherical Leveling Washers

Steel / Stainless Steel

SPECIFICATION

Steel 1.7225 (42 CrMo 4 V) ST

Zinc plated, blue passivated

Stainless steel AISI 303 (X 10 CrNiS 18-9) NI

INFORMATION

Spherical leveling washers GN 350.3 have been designed to match the leveling sets GN 350 (see page 1014), GN 350.1 (see page 1016), GN 350.2 (see page 1018) and GN 350.5 (see page 1020).

The two spherical washers are used together „und detachably“.

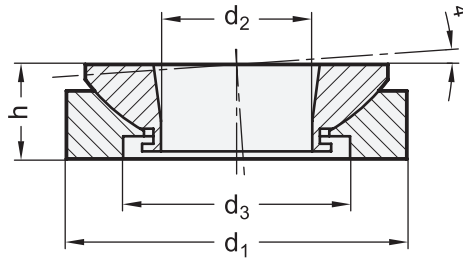
The load bearing capacity of these spherical washers is relatively high. This is not only due to the material quality but also to the matched sphere of the concave „pan“.

Furthermore it is recommended using high-strength washers for bridging dz.



TECHNICAL INFORMATION

- Stainless Steel Characteristics (see page A26)



GN 350.3-ST

Description	d ₁	d ₂	d ₃	h ±0.5	for thread up to max.	Static load in kN	⚖
GN 350.3-25-ST	25 ±0.2	8.5	15	8	M 8	40	20
GN 350.3-32-ST	32 ±0.3	13	20	10	M 10	65	44
GN 350.3-45-ST	45 +0.3/-0.5	20	30	12.5	M 16	120	105
GN 350.3-58-ST	58 +0.3/-1	29	38	16	M 24	210	215
GN 350.3-70-ST	70 +0.3/-1	36	48	20	M 30	330	362
GN 350.3-80-ST	80 +0.3/-1.2	44	61	20	M 36	495	425
GN 350.3-105-ST	105 +0.3/1.6	58	78	25	M 48	920	930

GN 350.3-NI

STAINLESS STEEL

Description	d ₁	d ₂	d ₃	h ±0.5	for thread up to max.	Static load in kN	⚖
GN 350.3-25-NI	25 ±0.2	8.5	15	8	M 8	271	20
GN 350.3-32-NI	32 ±0.3	13	20	10	M 10	43.4	44
GN 350.3-45-NI	45 +0.3/-0.5	20	30	12.5	M 16	84	105
GN 350.3-58-NI	58 +0.3/-1	29	38	16	M 24	148	215
GN 350.3-70-NI	70 +0.3/-1	36	48	20	M 30	225	372
GN 350.3-80-NI	80 +0.3/-1.2	44	61	20	M 36	323	427
GN 350.3-105-NI	105 +0.3/1.6	58	78	25	M 48	546	940

